



# BENTON PARK SCHOOL

# NEWS



February 2012 Issue 1

## INSIDE THIS ISSUE

- ~ The New Lunch Time Club (Page 2)
- ~ Attendance Since September (Page 2)
- ~ Christmas Non-Uniform Day collection vote (Page 2)
- ~ Vivo Records (Page 3)
- ~ 'Dates For Your Diary' (Page 2)
- ~ Snow Advice (Page 4)
- ~ Interview with a New Staff Governor (Page 4)
- ~ Sixth Form Section (Page 3)
- ~ Fun Facts (Page 2)



## HEAD'S COLUMN



Welcome to the first edition of our new student-produced newsletter. We intend 'Benton Park News' to be a conduit of information for both parents and pupils. I would like to congratulate and thank the editors for their work in publishing this first edition. Over time, we anticipate that a wide range of pupils will be able to be involved in the production of this and other publications.

We are very fortunate at Benton Park in having a dedicated and supportive Governing Body, which gives so freely of its time in helping the school move forward. A regular section of 'Benton Park News' will be a 'Meet A Governor' section. I would like to thank Mr Furniss, one of our Staff Governors for being interviewed to launch this feature.

We are now 12 working weeks away from the onset of public examinations. If any parent of pupils 'doing' exams this summer would like specific advice on how to help pupils to prepare and use their time productively, please contact us on the main school number, 0113 250 2330.

Finally, I would like to commend all pupils for their mature response to the bad weather conditions at the beginning of this week. Pupils have shown the very best side of Benton Park this week and have made a fantastic contribution to the smooth running of the school. Well Done everyone!

## NEW!

Welcome to the first edition of 'Benton Park School News', your new monthly newsletter filled with information about the school!

The 'Benton Park School News' is produced by 3 Sixth Formers who also manage the students website - if you want to find the news out early, check it regularly to be in the know.

Produced By M Burrows, C McGowan, D Walker

[www.bentonparkschool.co.uk](http://www.bentonparkschool.co.uk) ~ Students' Website

The newsletter will also be available on the students' website to download. Use the link on the 'Main Menu' bar called 'BPS NEWS' to view all the latest interviews and the

Please respect the environment and once you and your parents have read and finished with this newsletter recycle it! Thanks!



## ICT LUNCH CLUB

A new club has started at Benton Park. Its available to use during Dinner break and it allows you to finish any unfinished homework that you have due in for the next few days. The club is in F10 and you will need to collect a pass from the site team to use the club. You don't have to use a computer but the computers are available to assist if you so need one. However places are limited as it is a computer room so there are only so many computers available. Join in the club today and get that unfinished work finished as it could save you time later in the day. (There will be no access to games during this club).



## DATES FOR YOUR DIARY

Fri 10 Feb - Break Up (Today!)

Wed 15 Feb - Holidays / 6th Form Spanish Exchange returns

Mon 20 Feb - Return to school

Wed 22 Feb - Yr9 Option forms must be returned

Fri 24 Feb - Yr 11 D&T Controlled Assessment Folio hand-in date

Mon 27 Feb - AS H&Sc Work Experience starts, MFL Controlled Assessments start / GCSE Maths re-sit

Wed 29 Feb - GCSE Art/Photo exam / Yr 9 Careers Insight Event, Yr 10 Parents' Evening

Thu 1 Mar - GCSE Art/Photo exam / GCSE Science Modules / AS/AS P Design/Textiles practical completion date

Fri 2 Mar - AS H&Sc Work Experience ends, GCSE Art/Photo exam / Yr 10 Maths & Science Modules / Maths re-sit



Next Issue Out  
Friday 2nd March

## FUN FACTS

1. More than ten people a year are killed by vending machines.
2. The human brain has the capacity to store everything that you experience.
3. This school has over 1600 people who attend every day, and over 150 are staff.
4. The school opens on a morning at 6am and school is locked up at 10pm.
5. This school has over 550 computers and laptops.
6. Benton Park is over 50 years old

## VOTE - NON-UNIFORM MONEY

A big thank you to everyone for their kind support in helping to raise over £875.00 on the non-uniform day before Christmas. Half of the money raised will be donated to a charity which supports young people who suffer from a rare condition, which affected a pupil in school, Jacob Long, who sadly passed away 3 years ago. The other half is going to be split between 2 or 3 other charities; and we would like to know who you would like the money to be split between.

So have you voted yet? If not pop on to the students' website and vote now your last chance to vote will be at the end of the holidays!

## ATTENDANCE

The year with the best attendance: Year 7

Year 7: 96.4%

Year 8: 95.4%

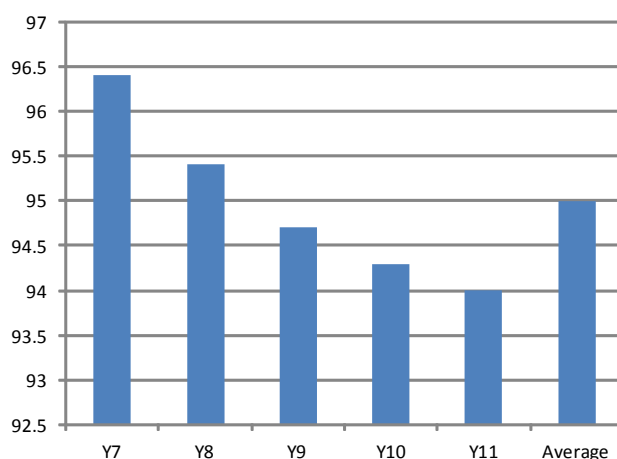
Year 9: 94.7%

Year 10: 94.3%

Year 11: 94%

Average: 95%

### Attendance Percentage



# SIXTH FORM

## LEARNING TO DRIVE

The Sixth Form are pleased to inform you that we will be supporting the a2om CIC (pronounced “atom kick”) and their big society initiative to raise educational standards for novice drivers throughout the UK. In the Summer Term each Year 12 student will be given free access to **Drive iQ**. This is an e-learning platform using cutting-edge driver behaviour principles to address the effect a young person’s attitude and behaviour can have on their driving. As part of the programme Parents can also access a free **Parent Guide**: “Is your child learning to drive? Everything you will need and want to know”. To view/download the guide, please go to [www.a2omcic.org](http://www.a2omcic.org) The a2om CIC is a Community Interest Company (100% not-for-profit).



## CHARITY

The Sixth Form are going to be distributing small yellow change collecting pots this month to help raise money for Barnardo’s, which is a children’s charity. So if you have any change, please keep it and pop it in to one of the collecting tins.



The Christmas non-uniform day also raised over £200 for Make A Wish Foundation. A very big thank you to everyone who donated.

## PRESIDENTS

The new Sixth Form presidents are Alice Smalley and Lauren Hinckey. Well Done to you both!

## STUDENT FINANCE

All upper sixth students have now received a finance talk last week. If students need any further help please see Mr Cresswell.

## GENERAL STUDIES

Please can all lower sixth students keep checking the notice board outside the common room to find out where they are meant to be on Wednesday period 5, as most will change fortnightly

## VIVOS

VIVO is the schools rewards system which was introduced in September and has been very successful, and we thank everyone for their time in helping to make it a success. We would like to congratulate everyone on their success. The top ten boys and girls have received the following amounts of Vivos.

The top forms in each year are

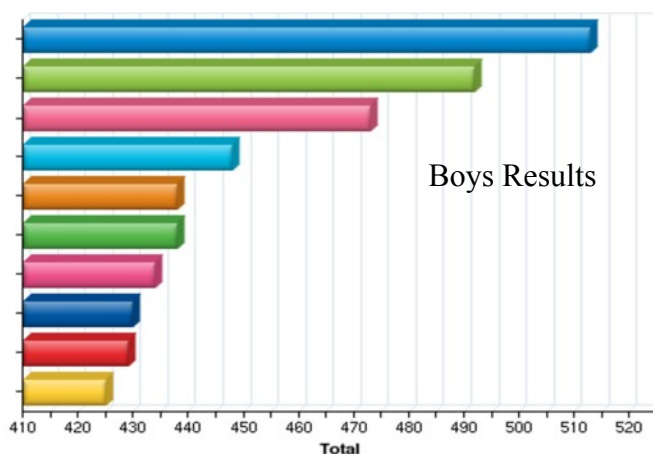
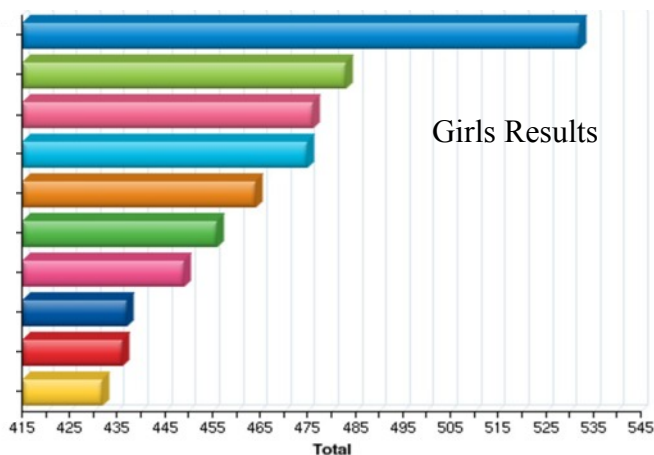
Year 7: 7DRR

Year 8: 8KH

Year 9: 9HP

Year 10: 10HO

Year 11: 11TL



## **BAD WEATHER GUIDANCE**

Go on to Leeds City Council's website for a list of school closures that day, it is normally updated as they receive the information

OR

Listen to Radio Leeds on 92.4 & 95.3 FM or 774 MW. School closures reports are broadcast at quarter to, and quarter past the hour.

The advice will be one of the following:

1. The school is closed
2. The school will have a staggered start e.g. start at 11.00 am
3. Only certain year groups and staff should attend

OR

Listen to Radio Aire 96.3 FM or Magic 828 MW. School closures are broadcast regularly before 9.00am.

The advice again will be one of the following

1. The school is closed
2. The school will have a staggered start e.g. start at 11.00am.
3. Only certain year groups and staff should attend.

No official information will be posted on Facebook

## **INTRODUCING A STAFF GOVERNOR - MR FURNISS**

### **Why did you personally want to become a governor?**

The education of young people is the most important job in the world in my opinion. Our students will be the leaders of tomorrow. Being a governor gives me an opportunity to positively influence key decisions that affect all aspects of life at Benton Park. I want the best for all our students and staff. I hope that I can provide an inside view of our school to the rest of the governing body that will help them to reach decisions that will benefit us all.

### **How do you intend to represent the staff here at Benton Park?**

Being a sociable type of a person I have very positive relationships with all teaching departments as well as all the other teams who make up our school. Without the constant hard work of the site team, dinner ladies and reception staff then the school just wouldn't work! I wish to liaise and seek out all members of staff's views and try to represent them when discussing school management and future policies on the governing body. I will be a link between staff and governors, be a critical friend when required and always accountable to my colleagues.

### **How do you intend to keep staff informed about the meetings that you have with other governors?**

I think it is very important for all members of staff to be aware of the key decisions that are being made that affect everyone at our school. We have at least 1 full staff meeting every week where I will be happy to share information with my colleagues. Also, when I'm not running sports clubs I can often be found in the staffroom at lunchtime. It is a busy hub where staff from all around the school like to meet and chat about life at school in general. I will always make sure that I am available to inform members of staff about key decisions.

### **Is teaching the only job you have ever done?**

No, when I left school I got a job with a friend's Dad's steel engineering company. It was great fun and a lot of hard work. I had to grow up fast working on busy building sites as they can be very dangerous places. I learned a lot about working hard and still keep in touch with many of the friends that I made while doing that job. I have also always been involved in football, either playing or coaching, since I was a little boy. After not managing to get paid to play, I eventually settled for getting paid to coach and worked as a football coach for a couple of years before I decided to train as a PE teacher.

### **Why did you want to become a teacher?**

I had to redo some of my education at college after leaving school, having not worked hard enough the first time round. It was tough having to go to college in the evening when a lot of my friends were out enjoying themselves. This taught me the value and importance of education. Having the opportunity, everyday, to help young people achieve their best is very rewarding. Being a teacher is without doubt the best job in world. No two days are the same and there is always something to smile about especially working alongside Mr Ross!

### **Why did Benton Park appeal to you?**

I remember playing football against Benton Park when I was in Year 8 or 9 and the friendliness of the pupils I was playing against has stuck with me to this day. It was not like that at my school and I was impressed. From my first day working here I have always found it to be a very welcoming and supportive place to work. There are a huge number of incredibly hardworking people at our school who strive everyday to improve the lives of all our students.

